

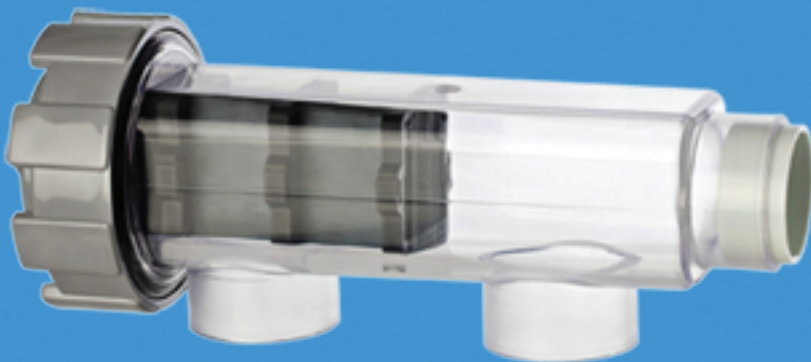


# XTreme

Saltwater Chlorinator



**Built  
Tough for  
Australian  
Conditions**



**LEGEND**   
chlorinators

**BEST QUALITY!  
BEST SERVICE!**

Pool products you can rely on





The XTreme Salt water chlorinator is designed and manufactured in Australia to suit our XTreme conditions using only quality electrical components and commercial grade cell materials.

Using industry proven technology, the XTreme's embedded micro-controller delivers an intelligent and responsive system not only for our commercial users but also for our domestic customers that is efficient, reliable and easy to operate.

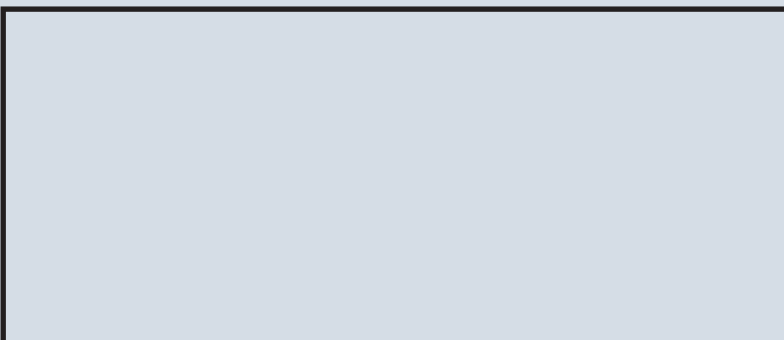
The XTreme takes into account your water temperature and salinity to help maintain the correct chlorine levels in your pool, simply enter in your settings on the LCD display, it's that easy.

The self-cleaning cell is a standard inclusion with the XTreme Salt Water Chlorinator, helping to reduce maintenance while saving you time and money. A compact fully sealed design built for Australian conditions.

For Salt Water Chlorination the Premium choice is Xtreme

# XTreme

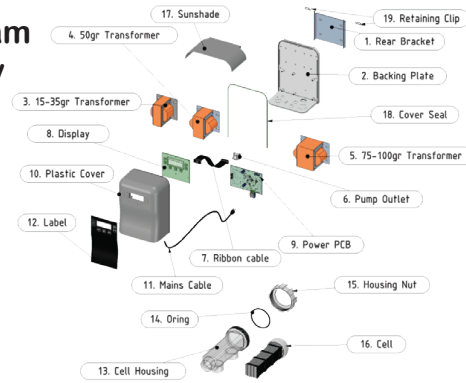
DISTRIBUTED BY:



Suitable for both Mineral & Sodium Salt Pools  
3500 - 7000PPM

## FEATURES

- Clever micro-controller
- Easy to operate and program
- Easy to read backlit display
- Display brightness control
- Self cleaning cell
- Super-chlorinate mode
- Spa mode
- Backwash function
- Salt measure
- Pump protection
- Water Temperature
- Accurate chlorine control
- Automatic power reduction when salt high
- Super Capacitor for timer backup
- Extra large cell surface for prolonged life
- Proven High quality cell material
- Works with any 230/240V Pump
- Stainless grade 304 mounting bracket with quick release pins



Sizing your XTreme Chlorinator  
Allow 1gram for every 2000ltrs of pool water  
eg: 50,000ltr = 25grams ( XT25 )

MODEL	CHLORINE PRODUCTION
	GRAMS/HOUR
XT15	15
XT20	20
XT25	25
XT30	30
XT35	35
XT50	50
XT75	75
XT100	100

**4 Year Warranty on the Power Pack**  
+  
**4 Years or 10,000hrs on the cell**  
(whichever comes first)

